

 **Madvac**®

All-Terrain Litter Vacuum

LN50 (diesel)

**Product
Overview**

www.madvac.com



July 2022

LN50 (diesel) options

Heated seat	9
Sunshield rooftop	10
Vacuum head	26
Wander hose.....	27
Litter collector bags.....	29
Bagless debris system	30
Water mist system	32
Fire extinguisher	33
Floor-mounted heater	35
Tire flatproofing	37

Table of Contents

Applications & Customers.....	3-4
Specs, Characteristics & Performance.....	5-21
Vacuum System.....	22-28
Litter Collection System.....	29-33
Safety, Comfort & Convenience.....	34-43
Contact Us.....	44

Technical specs are subject to change without prior notice



Application

From concrete to grass, the LN50 can tackle all types of urban terrain with ease.

- Parks and grass areas
- Sidewalks
- Bike and pedestrian lanes
- Parking lots
- Curb side
- Alleys
- Pathways
- Alongside buildings



Customers

- Cities & municipalities
- Outdoor cleaning contractors
- Airports & seaports
- Transit authorities
- Healthcare services
- Distribution centers
- Shopping malls
- Educational & sports facilities
- Manufacturing facilities
- Amusement parks
- Casinos
- Military
- Correctional facilities

Dimensions

Designed for narrow and hard-to-reach areas such as sidewalks and alleys





 **Madvac**


Ground clearance:
10 in. (254 mm)

Ground Clearance & Curb Climbing

**Curb climbing:
7 in. (178 mm) tall**

Weight

- Net/dry weight: 2574 lbs (1168 kg)
- Gross vehicle weight rating: 3150 lbs (1429 kg)
- Axle rating:
front 1980 lbs (898 kg);
rear 1980 lbs (898 kg)





Reliable, Robust, Long-lasting

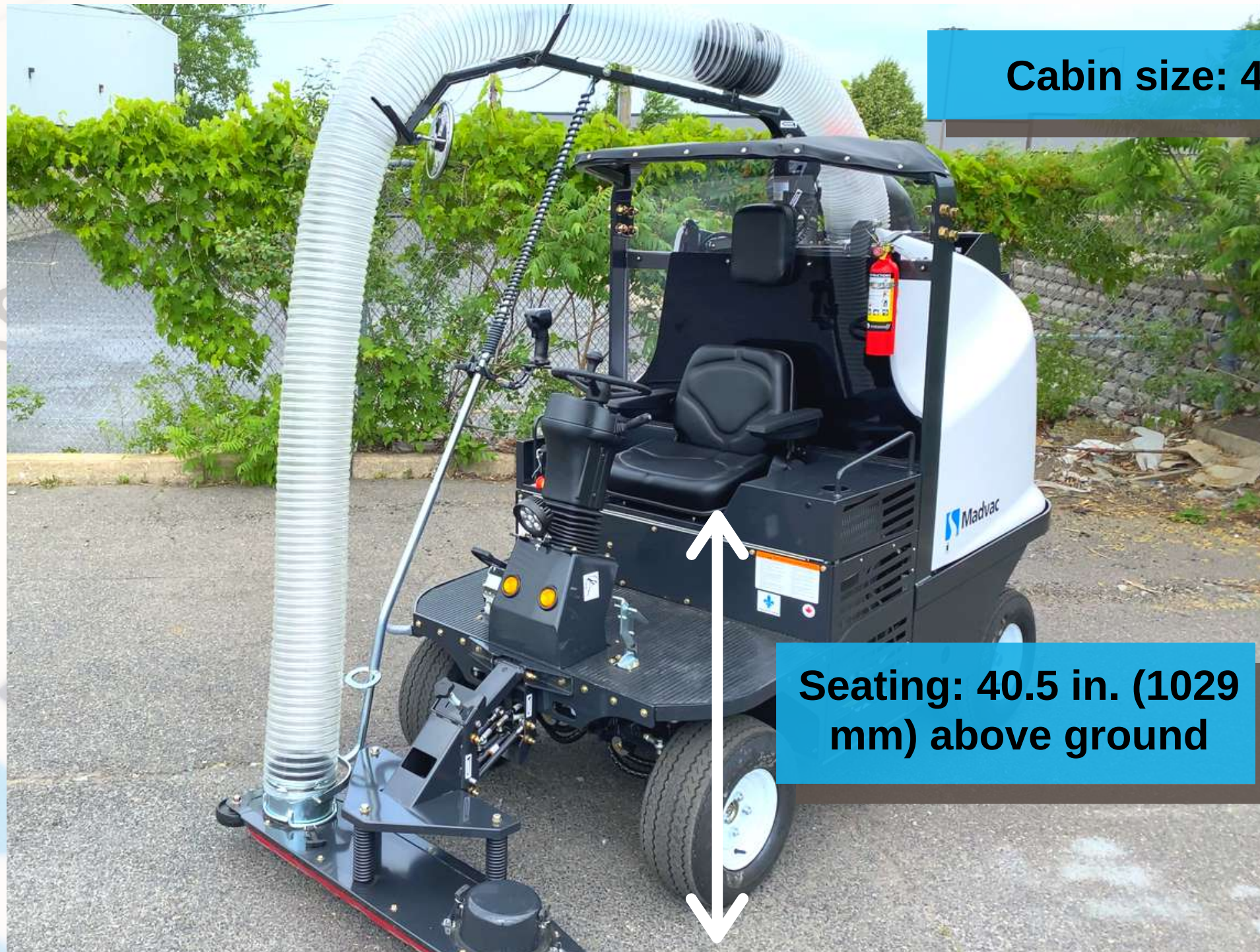


Frame & Body

- Heavy gauge steel body on a welded 1/4 in. (6.35 mm) structural steel frame
- Electrostatic powder-coated paint

Cabin

9



- Armrest, headrest, and optional heated seat for operator comfort
- Grab-handle and cup holder
- One safety lap belt

Sunshield Rooftop

Optional
sunshield helps
operator stay cool





Engine

- Model: Kubota Diesel D1105-E4B (EPA Tier 4 Final)
- Power: 24.8 hp (18.5 kw) @ 3200 rpm
- Displacement: 68.53 cu.in. (1123 cc)
- Air cleaner: 2-stage Donaldson with restriction indicator

General Machine Performance

- Max. forward speed: 12 mph (19 km/h)
- Max. reverse speed: 5 mph (8 km/h)
- Min. aisle turn: 180 in. (4572 mm)
- Internal turning radius: 60 in. (1524 mm)
- External turning radius: 90 in. (2286 mm)
- Cleaning speed:
up to 84,480 sq. ft. per hour
- Gradeability: 11.3 deg. (20%) with full & empty hopper



Instrumentation & Control



- Turn signal/horn/beacon/work light switch and lever
- Fuel gauge
- Operator presence indicator
- Parking brake indicator
- Left/right signal indicator
- Engine oil pressure indicator
- Engine temperature light
- Hourmeter
- Glow plug indicator
- Hazard light switch
- Low voltage indicator light
- Key ignition for starting and stopping the engine
- Key ignition glow plug on prior to starting the engine
- Neutral start switch installed on traction control pedal prevents engine from starting if pedal is pressed
- Lever and cable for engine throttle control

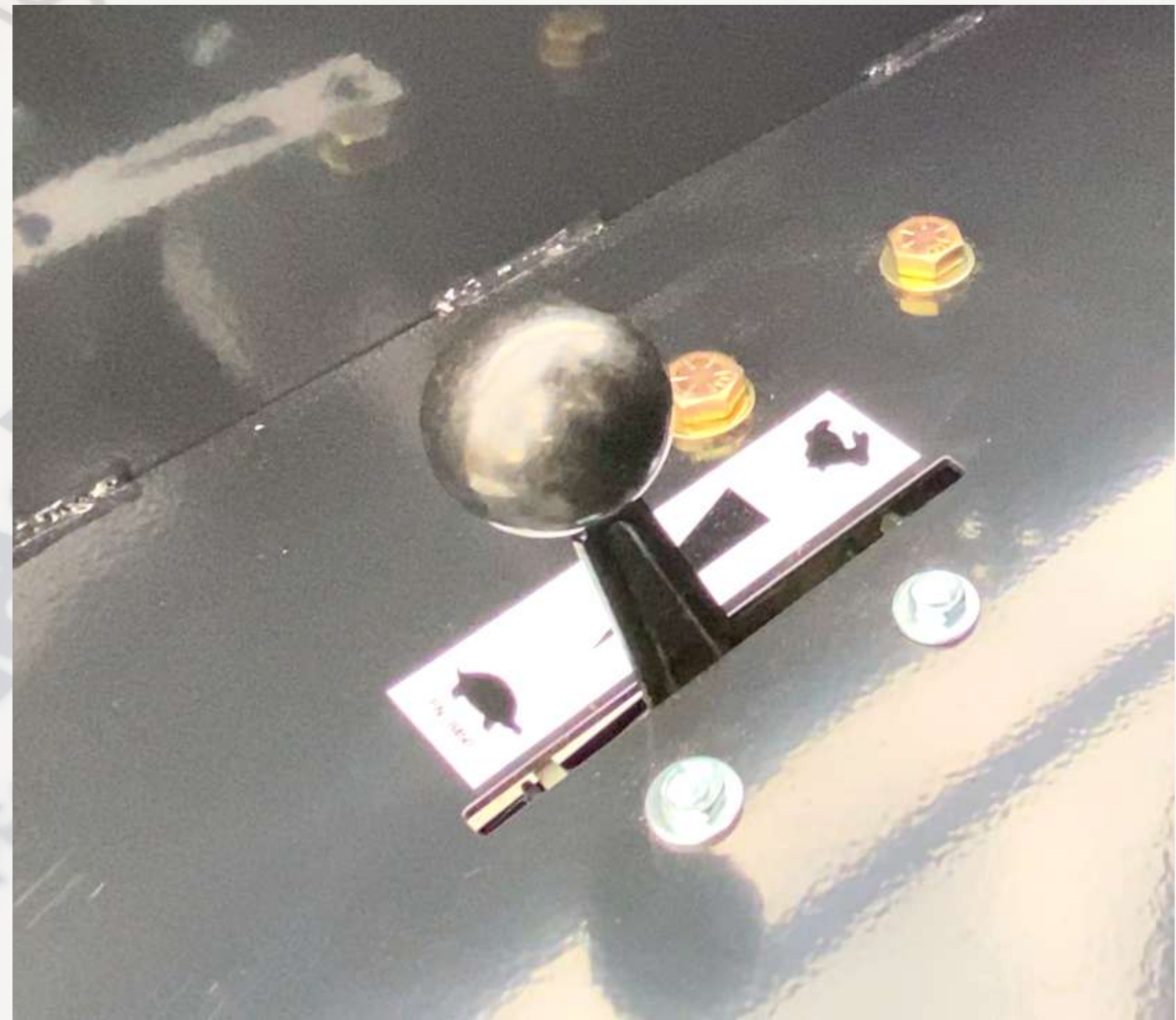
Steering: adjustable tilt steering column

Drive system: heavy-duty hydrostatic

Circuit protection: fuses

Throttle: progressive lever – from idle to maximum operating speed

Easy to operate
No CDL required



Traction

- Drive: front wheel drive
- Turf size (all 4 wheels)
 - Regular: 20.5x8x 10 in. / 520x203x254 mm (205/65-10)
 - Turf MV17094: 20x8x10 in. / 508x203x254 mm (205/60-10)
- Tire load capacity: 1323 lbs / 600 kg per tire
- Brakes: front hydrostatic brake; rear mechanical disc parking brake

Safer & more comfortable operation



Suspension

Front and rear: leaf spring



More comfort, better traction and a safer ride



dB Rating

Front decibel

- Cabin: 96 dB
- 5 feet away: 88 dB
- 10 feet away: 85 dB
- 20 feet away: 83 dB

Lighting

Complete road lighting and signaling package



- Strobe beacon
- LED headlight
- LED turn signals
- LED brake lights
- LED flashers
- LED backup lights (with backup alarm)
- License plate holder with light
- SMV emblem

Can easily do an 8-hour shift

Fuel Tank

Capacity: 10.2 gal. (39 L)



Capacity: 12.5 gal. (48 L)

Hydraulic Oil Tank

Easily accessible with see-through oil level indicator





Vacuum rating: 1600 CFM

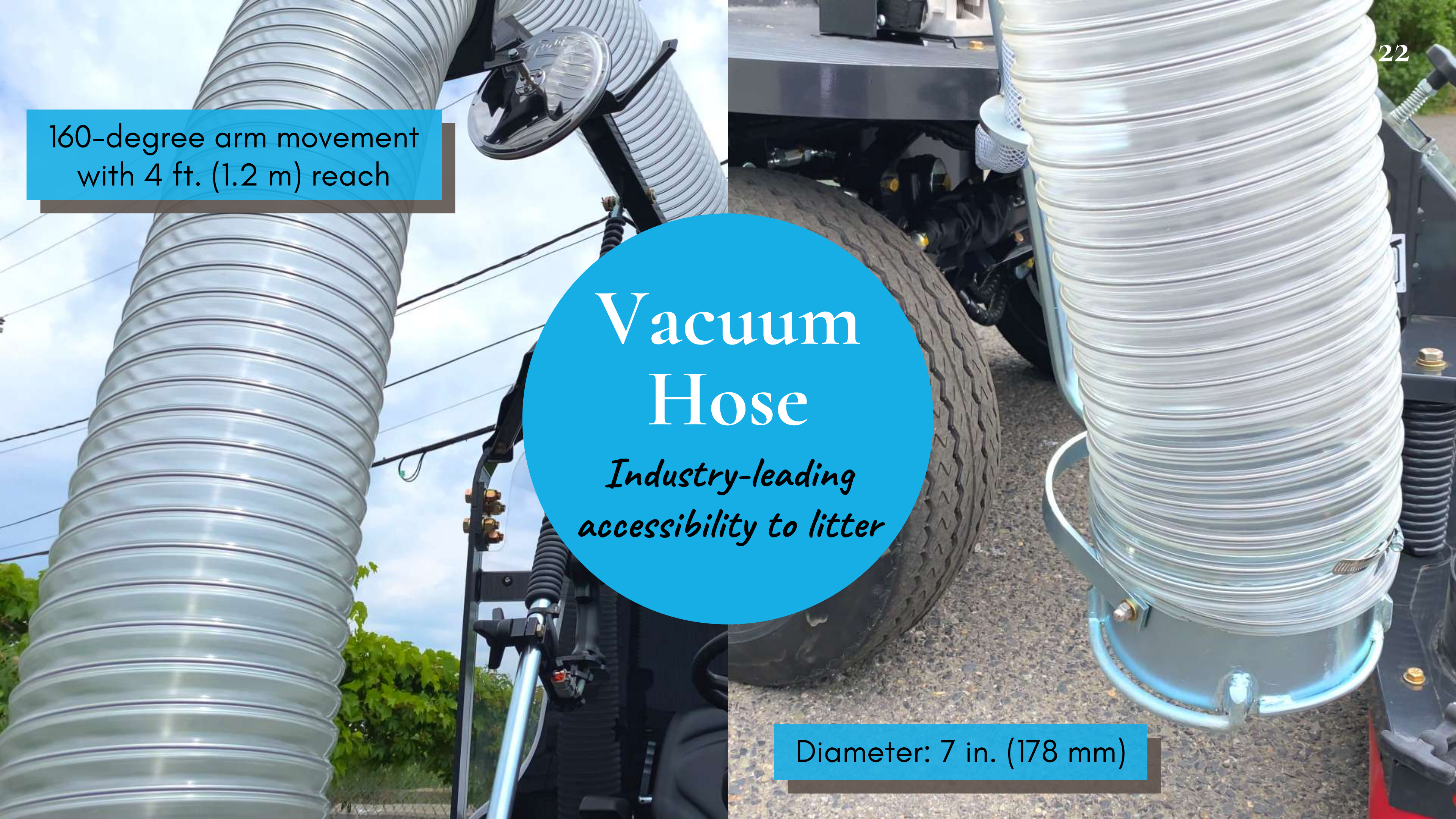
Vacuum fan position: bottom mounted

Vacuum Fan & Suction System

- Straight-through suction system compacts litter 2:1 ratio
- No litter comes in contact with the fan



Vacuum fan diameter: 14 in. (365 mm)



160-degree arm movement
with 4 ft. (1.2 m) reach

Vacuum Hose

*Industry-leading
accessibility to litter*

Diameter: 7 in. (178 mm)



For operator safety

Vacuum Hose Support Arm

*Eliminates potential
for workers'
compensation claims*

Mirrors

2 convex mirrors mounted
on vacuum arm with 340-
degree rear visibility



Vacuum Arm Handle

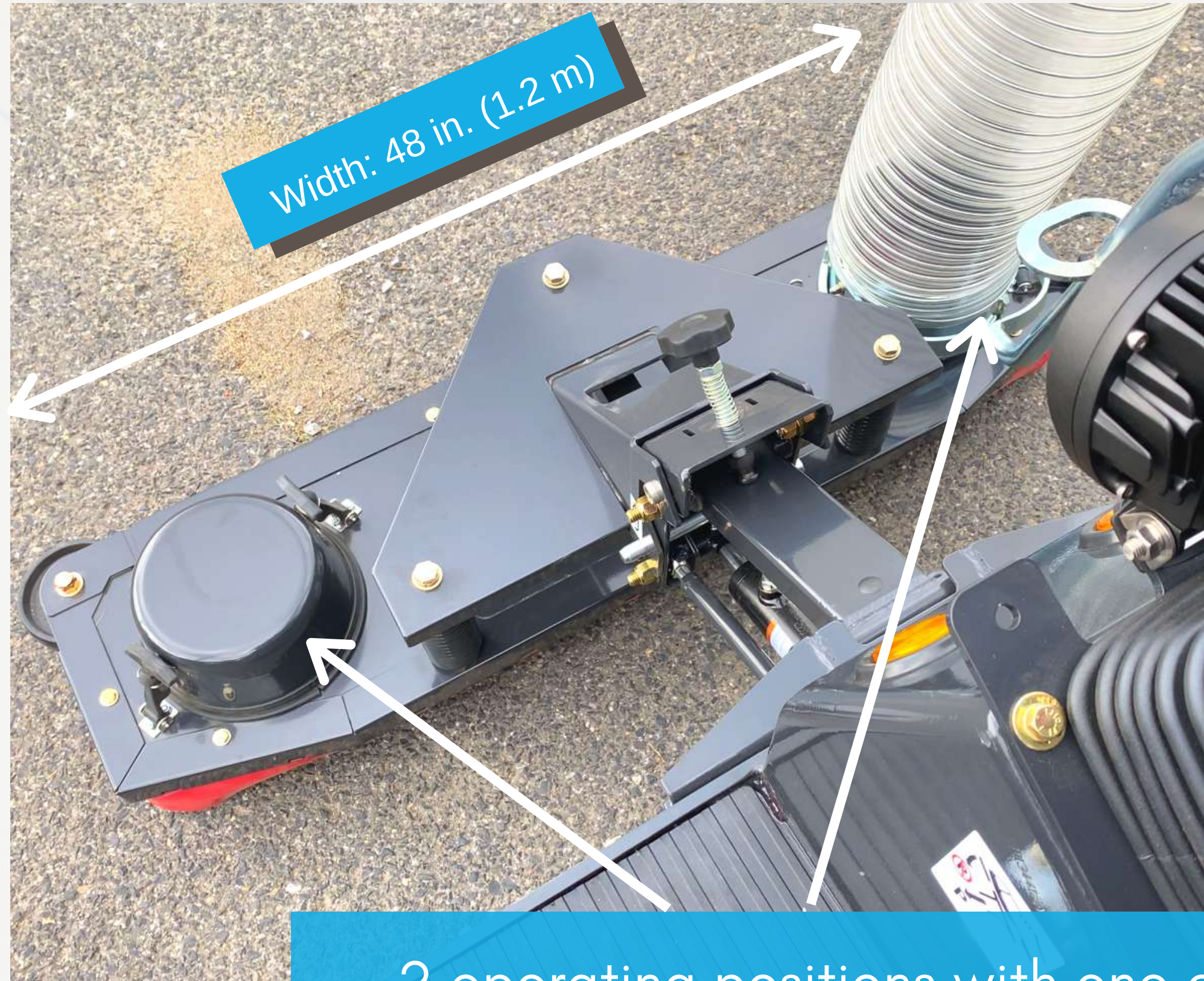
Up and down controls for effortless use (patented assist)

*Makes litter picking
effortless & injury free*



Vacuum Head Optional

*Effortless vacuuming, simply
drive over litter*



2 operating positions with one on
each side of the vacuum head



Wander Hose

Optional

*For confined,
hard-to-reach
areas*



Length: 15 ft. (4.57 m)
Diameter: 6 in. (152 mm)

Container


One bag

One container

Easy, Fast, Efficient

- 16-gauge powder-coated steel container
- Litter capacity
 - Volume: 75 gal. (284 L)
 - Weight: 150 lbs (68 kg)





Bag size: 42 x 51 in.
(1066 x 1295 mm)

Changing Litter Bags

*One container, one bag for
easier bag changing process
that takes only 45 sec!*

Bagless Debris System: Kevlar Bin



Optional Kevlar bin can be filled, then emptied into off-the-shelf bag



Dust Control

Exhaust bag captures dust particles that can escape from the minute holes of the special Madvac collector bags or Kevlar bin



New

Dust Control

Optional intermittent water mist system with 10.17 gal. (38.5 L) water tank: controls dust and reduces risk of cigarette butt fire inside the container

Safety





Foot Step

Helps operator
climb on board
easily and safely

New standard feature (Nov. 2020)



New



35

Foot Heater

Optional 2 speed floor-mounted heater keeps operator's feet warm during cold weather

New



36

Foot Activated Horn

Gives operator more ease and convenience
than pressing the turn signal lever

Convenience



Broom and rake holder



Storage compartment

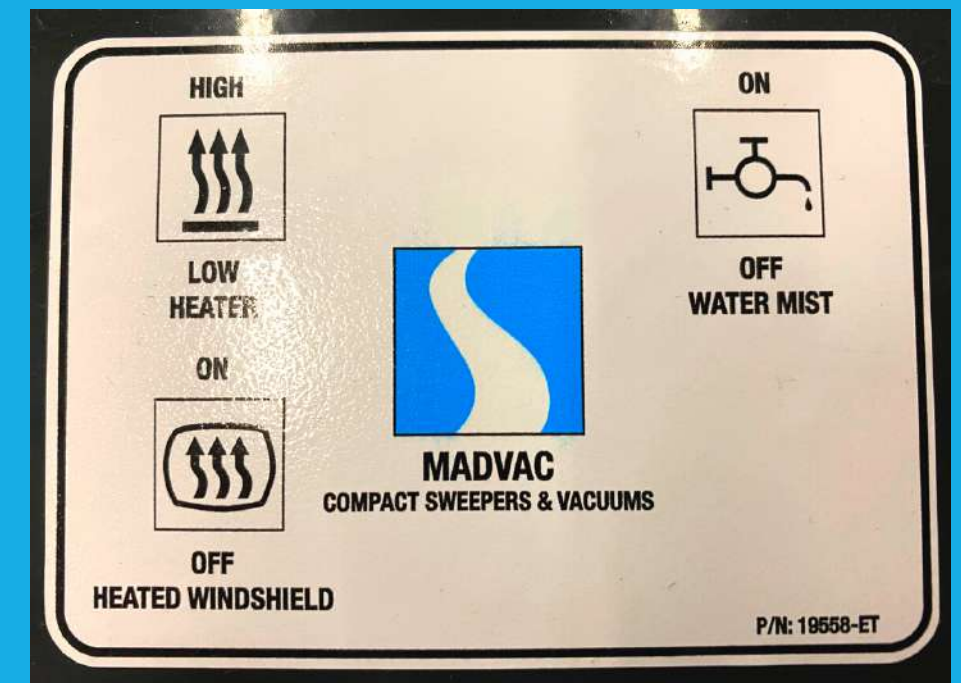


Tire flat proofing -
liquid sealant (optional)

Console Accessory Box

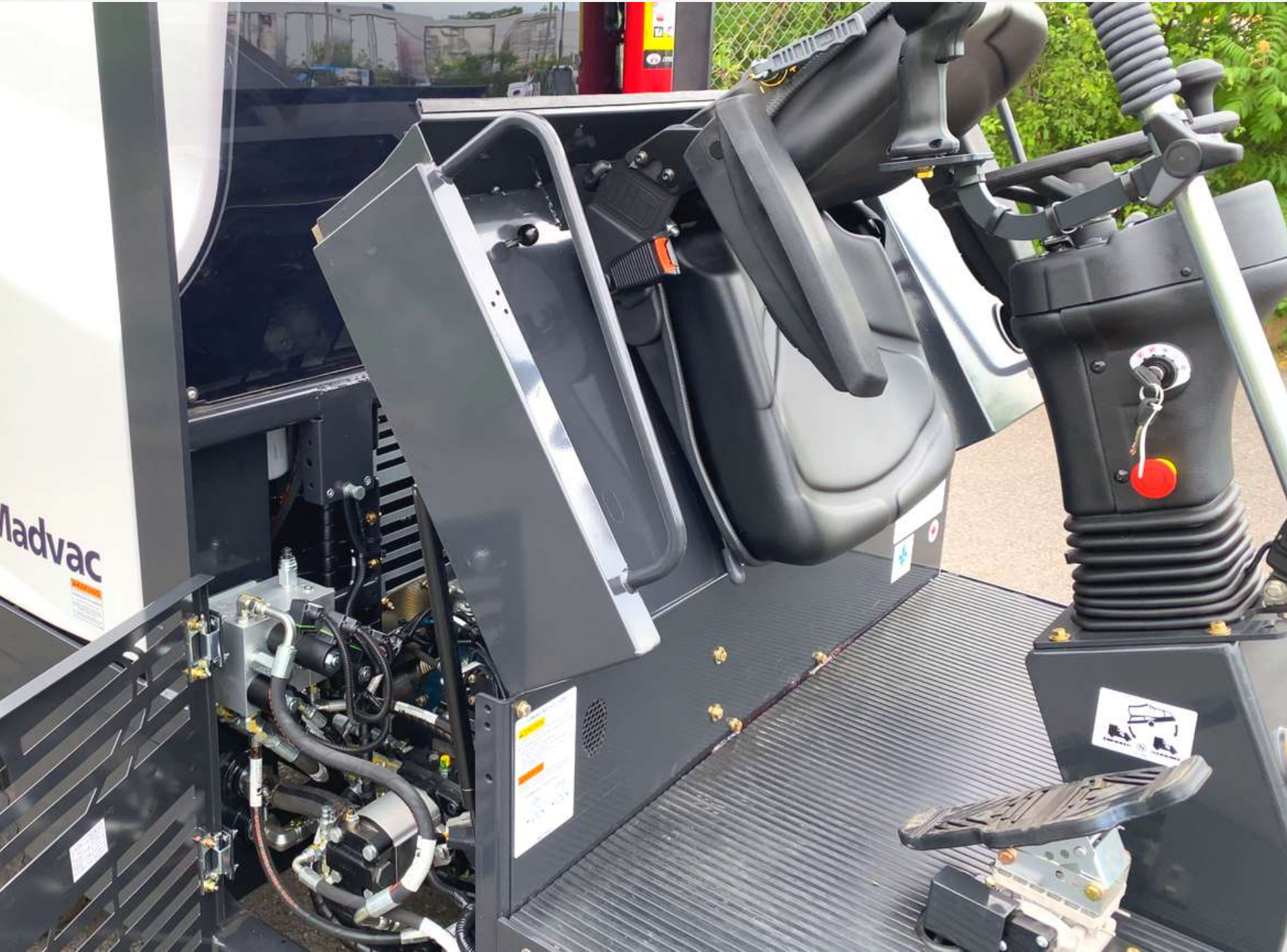
Console accessory box
with USB / 12V aux outlet
and switch for optional
floor heater and optional
water mist system

New standard feature (Nov. 2020)





License Plate Holder



Easy access to all critical components of the machine



Hinged side door and tilt seat for engine access



Sound
proofing

Easy access to all
critical components
of the machine



Hinged side door for
oil cooler and
radiator access

To schedule a demo, request a quote, or for more information on the LN50 all-terrain litter vacuum:



855-651-0444 (USA/Canada)
450-651-0444 (International)



info@exprolink.com



www.madvac.com

Sourcewell
Formerly NJPA

 **canoe**
procurement group of canada

awarded contract vendor #093021-EXP

